



PTO DRIVEN
MULCHERS





PIONEER SINCE 1990

LEADING IN MULCHING TECHNOLOGY

Mulching, tilling, clearing. With all your work, you are preparing the ground for something new – and under the toughest conditions. Here you can rely on the technological leader in vegetation management. PRINOTH will support you with innovations and highly efficient product solutions for perfect sustainable results. You will profit from the know-how and experience of the originator of the first mulcher with fixed tools. Building upon AHWI Engineering GmbH, PRINOTH today unites the agility and dynamics of a medium-sized business with the strength and reliability of the international PRINOTH Group.

“Made by PRINOTH” products are defined by high quality and matchless durability. The focus on mechanical drive systems guarantees you maximum efficiency with minimum fuel consumption and optimum performance. Competent advice and worldwide service with the best supply of spare parts provide the basis for superior economic efficiency and reliability – day by day, and year by year. For PRINOTH this constitutes “for solid ground”.

PRINOTH SUPPORTS YOU ALL THE WAY



CONSULTATION AND DIALOGUE

This is the basis of good partnership, so that PRINOTH solutions perfectly fulfil your requirements.



RESEARCH AND DEVELOPMENT

At PRINOTH we work continuously and intensively on forward-looking innovations and more efficient products.



PRODUCTION

The high-quality PRINOTH products are carefully processed and optimised for the toughest applications.



QUALITY MANAGEMENT

PRINOTH has held the DIN ISO 9001 certificate for many years and we continually improve our internal processes.



DELIVERY

Time is money. Therefore you can be firmly assured that PRINOTH will deliver quickly and on schedule.



COMMISSIONING

So that you get the best value from the start, you will be instructed by certified PRINOTH personnel.



OPERATION

Wherever you work with a PRINOTH machine, you can rely on the utmost durability and efficiency.



SERVICE

Following purchase, the PRINOTH After-Sales Network accompanies you with tailor-made services and a reliable supply of spare parts.

M450m

The M450m is a lightweight mulcher for universal use with tractors in the power range of 80–180 HP.

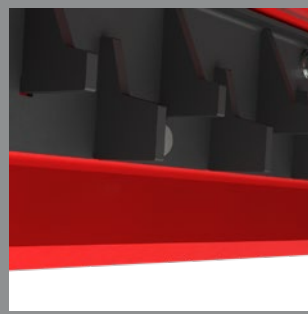
Benefits for you

- + Extremely light weight
- + Multiple working widths
- + Sturdy structure



Rotor blocking protection

The three-stage counter blades prevent large objects infiltrating and blocking the rotor.



Two-stage counter blades

The two-stage counter blades reduce the power requirement and increase the shredding quality. (Optional)



Centre of gravity

As the mulcher is arranged in an upright position, the centre of gravity is very close to the carrier vehicle



Lateral displacement

The lateral displacement enables to move the mulcher 300 mm either side to adapt it perfectly to the job.

WORKING WIDTH IN MM	1900	2200	2700
Power range HP	80 – 180	100 – 180	120 – 180
Total width in mm	2200	2500	3000
Weight kg	1300	1460	1540
Tools	48 x UPTs / 40 x BCS	56 x UPTs / 48 x BCS	56 x BCS



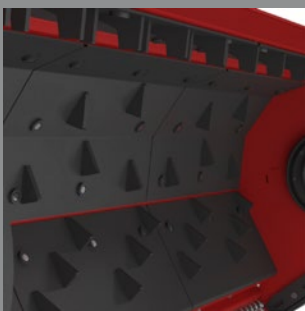
M550m



The M550m is a mulcher for medium-heavy applications with a rotor diameter of 21.6 in (550 mm). It is suitable for carrier vehicles with 100 to 250 HP and CAT III/IV.

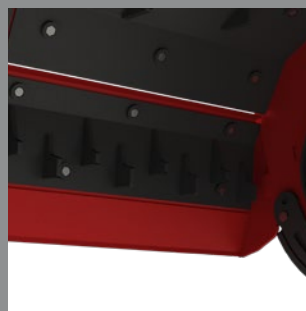
Benefits for you

- + Protected hydraulic lines
- + Flexibly configurable
- + Very simple to use



Body lining

Highly wear-resistant steel with counter blades reduces wear and tear and shreds the material more finely.



Two-stage counter blades

The offset blade arrangement requires less power and increases the shredding quality. (Optional)



Flexible linkage

The adjustable upper linkage point provides a flexible response to the carrier vehicle.



Power Belt

The spring tension of the belts reduces wear and tear and ensures optimum power transmission.

WORKING WIDTH IN MM	2110	2410
Power range HP	100 – 250	100 – 250
Total width in mm	2500	2800
Weight kg	2050	2200
Tools	52 x UPTs / 56 x BCS	60 x UPTs / 64 x BCS

M650m

The M650m is a mulcher for medium-heavy applications with a rotor diameter of 25.6 in (650 mm). It is suitable for carrier vehicles with 200 to 350 HP and CAT III/IV.

Benefits for you

- + Optimal power flow
- + High performance range
- + Very easy to maintain



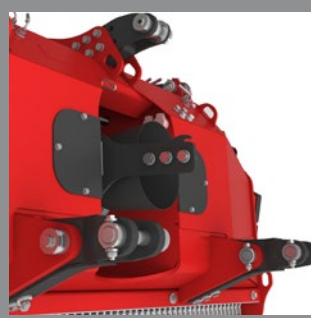
Body lining

Highly wear-resistant steel with counter blades reduces wear and tear and shreds the material more finely.



Two-stage counter blades

The offset of the blade arrangement requires less power and increases the shredding quality. (Optional)



Flexible linkage

The adjustable upper linkage point provides a flexible response to the carrier vehicle.



Power belt

The spring tension of the belts reduces wear and tear and ensures optimum power transmission.

WORKING WIDTH IN MM	2050	2050	2550
Power range HP	200 – 350	200 – 350	200 – 350
Total width in mm	2500	2500	3000
Weight kg	2650	2650	3050
Tools	48/60 x UPTs / 60 x BCS	48/60 x UPTs / 60 x BCS	64/80 x UPTs / 72 x BCS

M650m TURBO



The M650m TURBO is a mulcher for medium-heavy forest use. It is equipped with a patented turbo clutch for even more safety and is designed for carrier vehicles between 200-400 HP.

Benefits for you

- + Stable and weight-optimized
- + Turbo clutch as safety
- + Very easy to maintain



Safety in the drive train

The turbo clutch balances out power peaks and protects the drive of the carrier vehicle and the mulcher.



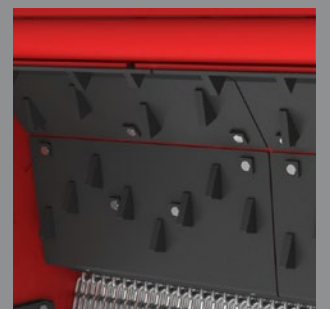
Toothed V-belt

The power transmission is optimally effected via a toothed V-belt.



Rotor

Proven rotor technology for excellent shredding quality and best mulching results.



Body lining

Highly wear-resistant steel with counter blades reduces wear and tear and shreds the material more finely.

WORKING WIDTH IN MM	2350	2550
Power range HP	200 – 400	200 – 400
Total width in mm	2800	3000
Weight kg	3700	4350
Tools	56/72 x UPTs / 68 x BCS	64/80 x UPTs / 72 x BCS

M700



The M700 is a mulcher for heavy duty forestry applications with a rotor diameter of 27.5 in (700 mm). It is designed for carrier vehicles with 250 to 500 HP and CAT III/IV.

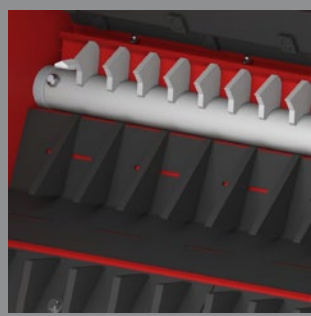
Benefits for you

- + High stability and long service life
- + Reduced power demand
- + Individual shredding quality



Safety in drive train

The turbo clutch balances out power peaks and protects the drive of the carrier vehicle and the mulcher.



Adjustable counter blades

The density grade of the mulch material can be adjusted using the hydraulic counter cutter rakes.



Strong drive elements

The machine elements are generously proportioned and designed for reliability in heavy applications.



Power belt

The spring tension of the belts reduces wear and tear and ensures optimum power transmission.

WORKING WIDTH IN MM	2300	2500
Power range HP	250 – 500	300 – 500
Total width in mm	2800	3000
Weight kg	4500	4700
Tools	56/68 x UPT	76 x UPT

FM900



The FM900 is a robust mulcher with a rotor diameter of 35.4 inch (900 mm) for very hard forest operations. It is designed for carrier vehicles between 300-500 HP and CAT III/IV.

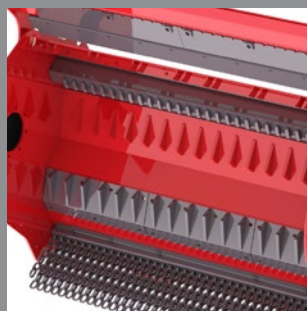
Benefits for you

- + Maximum productivity
- + Turbo clutch as safety
- + Excellent shredding quality



Safety in the drive train

The turbo clutch balances out power peaks and protects the drive of the carrier vehicle and the mulcher.



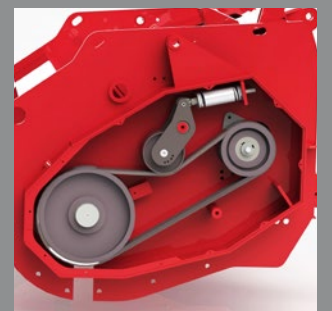
Adjustable counter rake

The fineness of the mulch material can be adjusted by the hydraulic counter rake.



Transmission oil cooler

Additional cooling of the oil in the high horsepower range as well as ensuring the oil quality through an additional oil filter.



Power belt

Due to the spring tension of the belts, wear is reduced and power is optimally transmitted.

WORKING WIDTH IN MM	2300
----------------------------	-------------

Power range HP	300 – 500
----------------	-----------

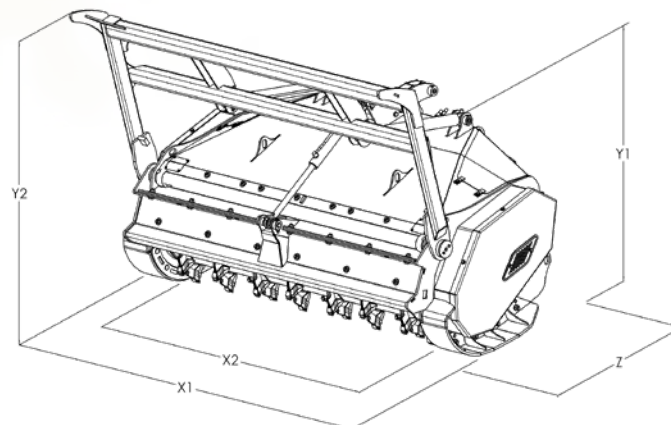
Total width in mm	2900
-------------------	------

Weight kg	5400
-----------	------

Tools	52 x UPT
-------	----------

Technical Data

	POWER RANGE HP	WORKING WIDTH IN MM (X2)	TOTAL WIDTH IN MM (X1)	HEIGHT IN MM (Y1)	DEPTH IN MM (Z)	WEIGHT LBS KG	TOOLS	POWER TAKE-OFF SPEED
M450m	80 – 180	1900	2200	1010	686	1100	40x BCS /48x UPTs	1000
	100 – 180	2200	2500	1010	686	1460	48x BCS /56x UPTs	1000
	120 – 180	2700	3000	1010	686	1540	56x BCS	1000
M550m	100 – 250	2110	2500	1203	1369	2050	52x UPTs /56x BCS	1000
		2410	2800	1203	1369	2200	60x UPTs /64x BCS	1000
M650m	200 – 350	2050	2500	1253	1520	2650	48/60x UPTs /60x BCS	1000
		2350	2800	1253	1520	2850	56/72x UPTs /68x BCS	1000
		2550	3000	1253	1520	3000	64/80x UPTs /72x BCS	1000
TURBO	200 – 400	2350	2800	1253	1520	3700	56/72x UPTs /68x BCS	1000
		2550	3000	1253	1520	4350	64/80x UPTs /72x BCS	1000
M700	250 – 500	2300	2800	1720	1710	4050	56/68x UPT	1000
	300 – 500	2500	3000	1720	1710	4700	76x UPT	1000
FM900	300 – 500	2300	2900	1973	1727	5400	52x UPT	1000



Tools

Our tools are designed to prevent the build-up of mounds in the middle of the mulching strip and reduce the risk of unbalance to a minimum.

To avoid unbalancing opposite tools should always be changed at the same time. In our system the opposing counterpart of the tool to be changed is easy to identify. Our tool systems are suitable for all ground conditions, vegetation types and densities. Depending on their layout, tools can be rotated when worn.

BCS ROTOR SYSTEM

- + Very high cutting performance
- + Perfect depth control
- + For jobs working above the ground or with slight ground contact



BCS02

BCS03

UPTS ROTOR SYSTEM

- + No need to retighten
- + Reduced power demand
- + Safe fit under extreme conditions
- + Universal for use above and in the ground



UPTS02

UPTS04

UPTS07

UPTS08

UPT ROTOR SYSTEM

- + Reduced fuel consumption
- + Suitable for stone-breaking
- + Universal for use above and in the ground



UPT02

UPT08.02

UPT09

UPT11

PTO SHAFT ALIGNMENT

W-Kinematic while keeping equal and W-shaped PTO shaft angles.

This prevents damage to the PTO shaft and supports an ideal adaptation to the conditions of the ground

- + Faster working
- + Better results
- + Longer lifetime of the PTO shaft plus higher lifting





Other sales and service sites can be found on www.prinoth.com

PRINOTH GmbH
Im Branden 15
88634 Herdwangen
GERMANY
Phone +49 (0)7557 9212-0
prinoth.germany@prinoth.com

PRINOTH AG
Brennerstraße 34
39049 Sterzing (BZ)
ITALY
Phone +39 0472 72 26 22
prinoth@prinoth.com

PRINOTH Ltd.
1001 J.-A. Bombardier Street
Granby Qc J2J 1E9
CANADA
Phone +1 450 776 3600
sales.na@prinoth.com