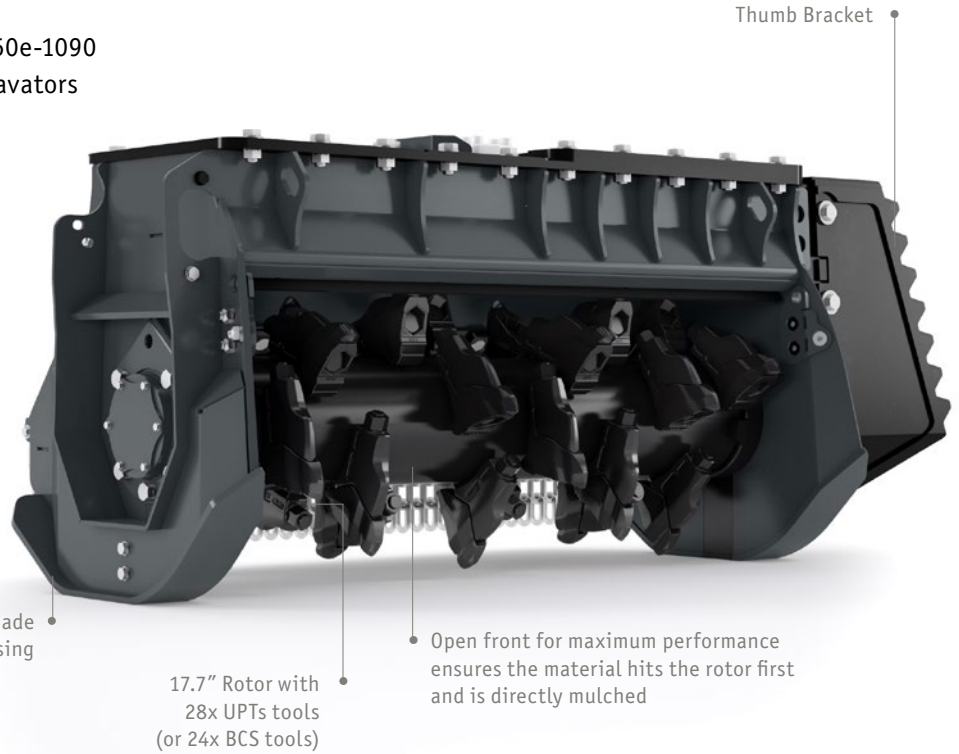


ROBUST. VERSATILE. CUTTING-EDGE.

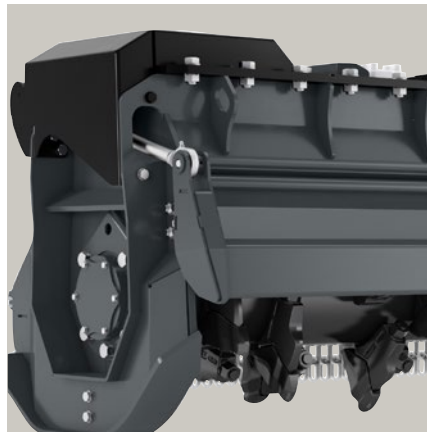
M450e-1090 – NEXT GENERATION FORESTRY MULCHER FOR EXCAVATORS

The updated forestry mulcher M450e-1090 is the perfect fit for 10 – 15 t excavators with a volume flow from 24 – 45 gpm (90 – 170 l/min).



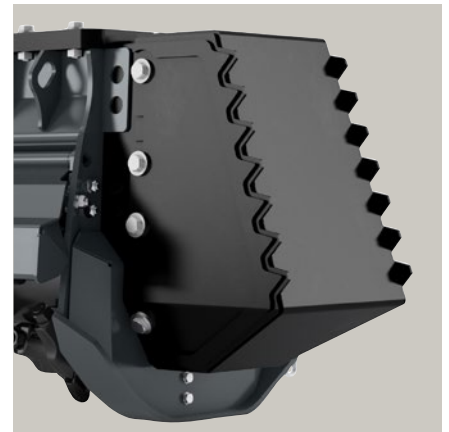
ROBUST HOUSING

Shredding chamber with additional counter blades for perfect, uniform shredding of the material.



PROTECTION FLAP

The optional flap on the front of the mulching head enables optimal mulching. It can provide extra protection by reducing uncontrolled ejection of mulched material.



THUMB BRACKET

Using the thumb bracket, the operator can position the material to be mulched.

Pinotti

ROBUST AND VERSATILE

The design and materials of the M450e-1090 have been optimized for more robustness and versatility. In addition to stronger skids and Hardox 400 reinforced sidewalls, the reinforced motor cover effectively protects against dirt and strong impacts.



MAIN TECHNICAL BENEFITS

- KTR claw coupling between rotor and hydraulic motor reduces wear and increases lifetime
- New side cover (thumb bracket) with teeth allows easy positioning of material
- Available with or without flap, electronically or hydraulically controlled (optional)
- 3 hydraulic motor options: 40 cc, 45 cc, or 73 cc, for a perfect match to the machine
- The hoses to the cylinder are protected inside the housing
- Only a pressure and return line, no drain line required

TECHNICAL DATA M450e-1090

Working width	43.3 in (1,100 mm)
Total width	63 in (1,600 mm)
Weight*	1,455 lb (660 kg)
Rotor diameter	17.7 in (450 mm)
Volume flow	24 - 45 gpm (90 - 170 l/min)
Tools	24x BCS or 28x UPTs
Height (with flap)	27.6 in (700 mm)
Depth (with flap)	30.4 in (773 mm)

* Weight depending on the configuration of the machine

PRINOTH GmbH

Im Branden 15
88634 Herdwangen
GERMANY
Tel. +49 7557 92120
prinoth.germany@prinoth.com

PRINOTH AG

Brennerstraße 34
39049 Sterzing
ITALY
Tel. +39 0472 72 26 22
prinoth@prinoth.com

PRINOTH Ltd.

1001 J.-A. Bombardier Street
Granby Qc J2J 1E9
CANADA
Tel. +1 450 776 3600
sales.na@prinoth.com

Locate your nearest sales and service points at [prinoth.com](https://www.prinoth.com)